



品质铸就信赖
「QUALITY BUILDS TRUST」

气体压缩系统选型手册

GAS COMPRESSION SYSTEM SELECTION MANUAL



品质铸就信赖
「QUALITY BUILDS TRUST」

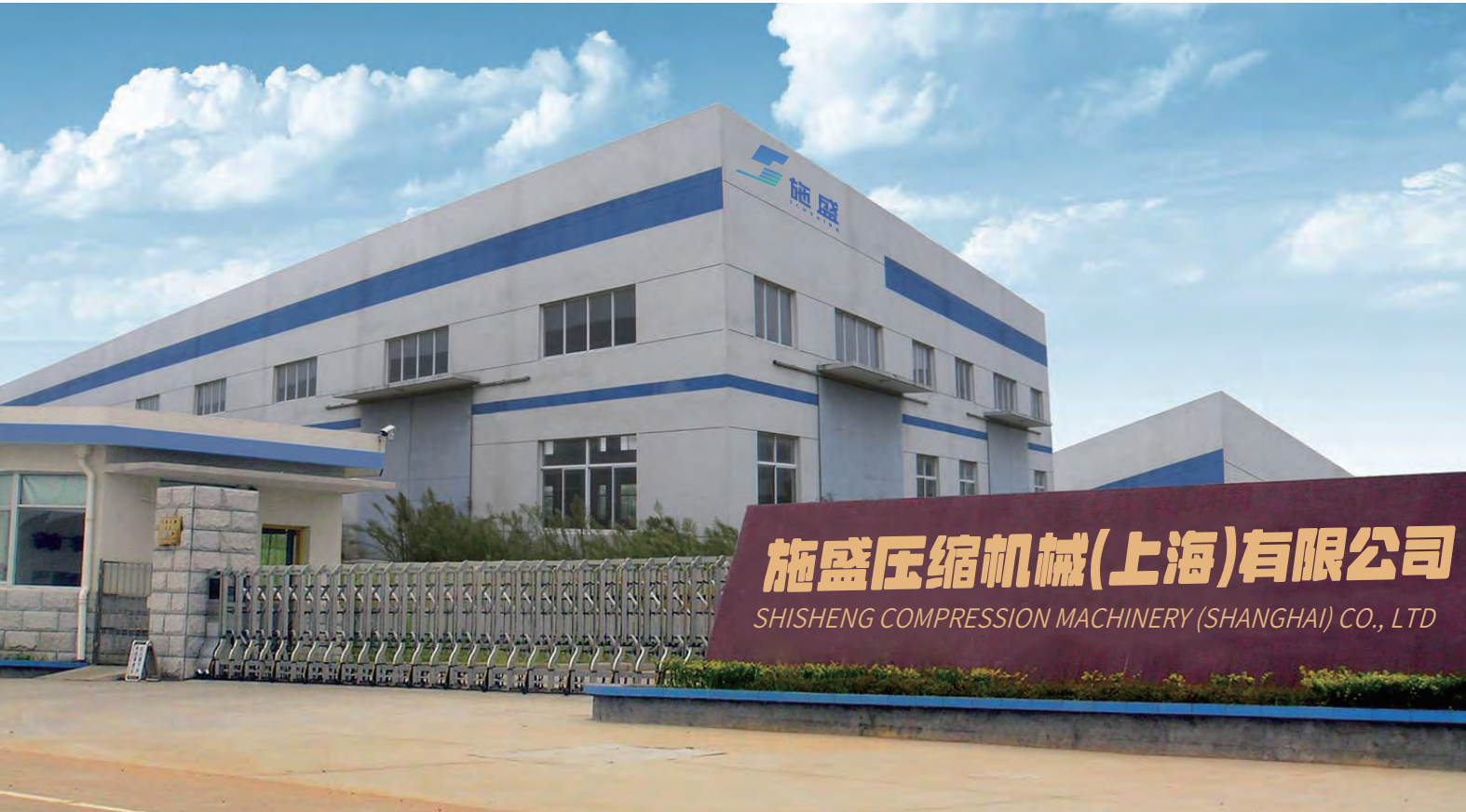


施盛压缩机械(上海)有限公司
SHISHENG COMPRESSION MACHINERY (SHANGHAI) CO., LTD

地址:上海市奉贤区迎金路185号
电话:021-54848628
传真:021-54848628
邮箱:sale@shishengsh.cn
网址:www.shishengsh.cn

施盛压缩机械(上海)有限公司
SHISHENG COMPRESSION MACHINERY (SHANGHAI) CO., LTD

COMPANY INTRODUCTION
公司简介



施盛压缩机械(上海)有限公司1993创立于上海,是一家集压缩机设计研发、生产、营销为一体的高精尖技术型企业,在全国设有多个分公司和办事处,为我们的客户提供24小时全天候的服务。

自施盛创立以来,通过30年间不断学习、吸收先进的制造技术和管理理念,形成了全面的计算机辅助设计和制造流程,并通过CRM、ERP等信息化软件不断加强管理。目前公司设有上海、江苏两大生产基地,工厂占地31000平方米,员工140人,其中高级技术人员25人,售后人员12人,并拥有各类大型加工设备20余台。公司现已通过ISO9001质量管理体系认证,40MPa高压活塞式空压机获得上海市质检技术研究院的检测证书,是省空压机行业会员单位,并被多次评为空压机行业先进企业。

施盛深耕压缩机行业30余年,秉承着“品质铸就信赖”的经营理念,开拓创新,奋勇向前,所有产品的核心部件均采用优质产品,结合施盛压缩机精湛的制造技术、严格的工艺要求和ISO9001质量体系,产品在高温、高湿等极端环境,空压机都能每年365天不间断使用,并使每一台机器能实现高效率、低能耗、安全可靠、寿命长等特点。

回首过去,展望未来,施盛不仅代表了完美的压缩机制造技艺,更是中国制造走向世界的坚定决心,热忱欢迎国内外客户莅临指导!

Shisheng Compression Machinery (Shanghai) Co., Ltd. was founded in 1993 in Shanghai. It is a high-precision and cutting-edge technology enterprise that integrates compressor design, research and development, production, and marketing. It has multiple branches and offices across the country, providing 24/7 service to our customers. Since its establishment, Shisheng has continuously learned and absorbed advanced manufacturing technology and management concepts for 30 years, forming a comprehensive computer-aided design and manufacturing process, and continuously strengthening management through information software such as CRM and ERP. At present, the company has two major production bases in Shanghai and Jiangsu, with a factory area of 31000 square meters and 140 employees, including 25 senior technical personnel and 12 after-sales personnel. It also has more than 20 types of large-scale processing equipment. The company has passed the ISO9001 quality management system certification, and the 40MPa high-pressure piston air compressor has obtained the testing certificate from the Shanghai Quality Inspection and Technology Research Institute. It is a member unit of the provincial air compressor industry and has been repeatedly rated as an advanced enterprise in the air compressor industry. Shisheng has been deeply involved in the compressor industry for more than 30 years, adhering to the business philosophy of "quality builds trust", exploring and innovating, and moving forward courageously. All core components of the products are made of high-quality products, combined with Shisheng compressor's exquisite manufacturing technology, strict process requirements, and ISO9001 quality system. The products can be used continuously for 365 days every year in extreme environments such as high temperature and high humidity, and each machine can achieve high efficiency, low energy consumption, safety and reliability, and long service life. Looking back at the past and looking forward to the future, Shisheng not only represents the perfect compressor manufacturing technology, but also the firm determination of Chinese manufacturing to go global. We warmly welcome domestic and foreign customers to visit and guide us!

ENTERPRISE CERTIFICATE
企业证书



质量管理体系认证证书
Quality Management System Certification Certificate

全国工业产品生产许可证
National Industrial Product Production License

检测报告
Test Report

高压空气压缩机检测报告
High pressure air compressor inspection report

上海施盛机械制造有限公司
中国空气压缩机行业先进企业
CHINA'S AIR COMPRESSOR INDUSTRY ADVANCED ENTERPRISES

中国空气压缩机行业先进企业
Advanced Enterprise in China's Air Compressor Industry

质量管理体系认证证书
QUALITY MANAGEMENT SYSTEM CERTIFICATE

质量管理体系认证证书
Quality Management System Certification Certificate

上海施盛机械制造有限公司
会员单位
江西省空气压缩机行业协会
二零一九年十二月

江西省空气压缩机行业协会会员单位
Member unit of Jiangxi Air Compressor Industry Association

Generate Strength
生产实力



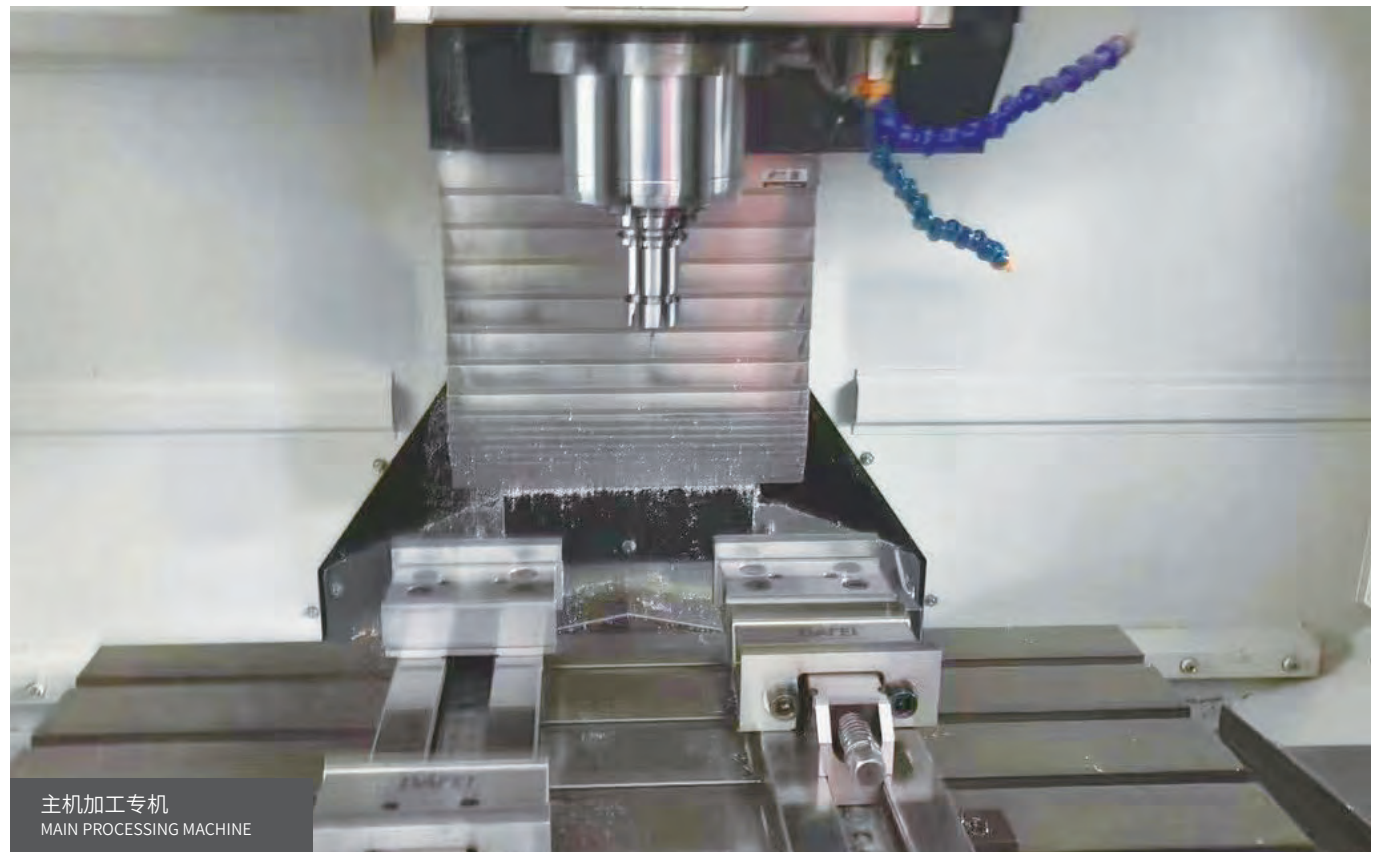
动平衡机
DYNAMIC BALANCING MACHINE



台湾大金CNC加工中心
TAIWAN DAIKIN CNC MACHINING CENTER



主机加工专机
MAIN PROCESSING MACHINE



主机加工专机
MAIN PROCESSING MACHINE



双螺杆主机
TWIN SCREW HOST

转速快, 效率高, 可为增压机提供稳定的气源

Fast speed, high efficiency, can provide a stable air source for the booster engine



空气滤芯
AIR FILTER ELEMENT

采用进口材质, 减少各类污染物, 保证压缩气体的纯净

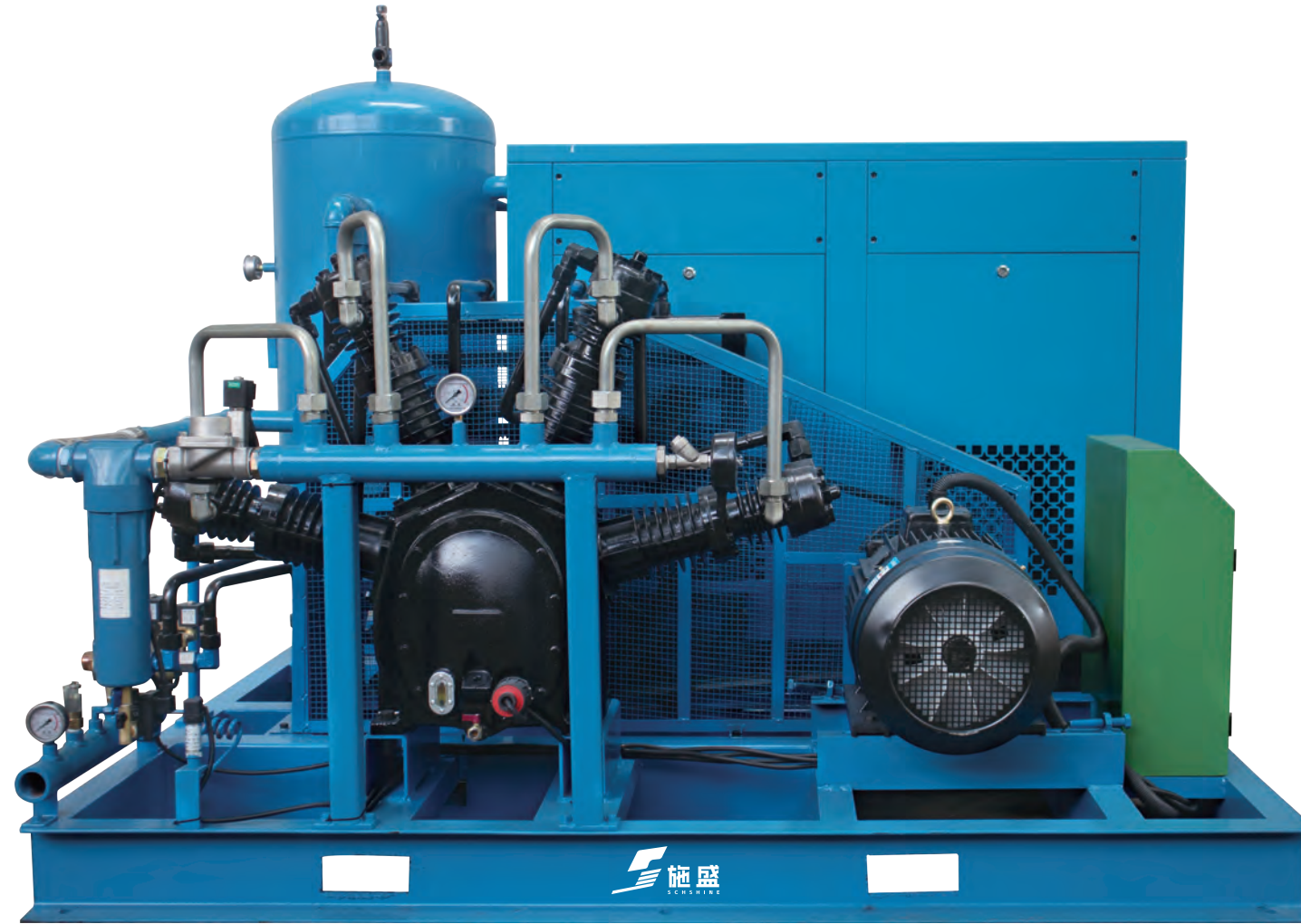
Using imported materials to reduce various pollutants and ensure the purity of compressed gas



低油位保护器
LOW OIL LEVEL PROTECTOR

可24小时监控曲轴箱内的机油位置

Can monitor the oil level in the crankcase 24 hours a day



智能化操控面板
INTELLIGENT CONTROL PANEL

实时监控整机运行参数, 故障报警和记录

Real time monitoring of the operating parameters of the entire machine, fault alarms and records



增压机
BOOSTER ENGINE

配备重载轴承和HT250铸铁活塞, 适用于高压环境, 寿命长

Equipped with heavy-duty bearings and HT250 cast iron pistons, suitable for high-pressure environments with long service life



散热系统
COOLING SYSTEM

独特的风叶轮设计可为气缸和散热器同时散热

The unique impeller design allows for simultaneous heat dissipation of the cylinder and radiator



PET吹瓶行业
PET BLOWING BOTTLE INDUSTRY



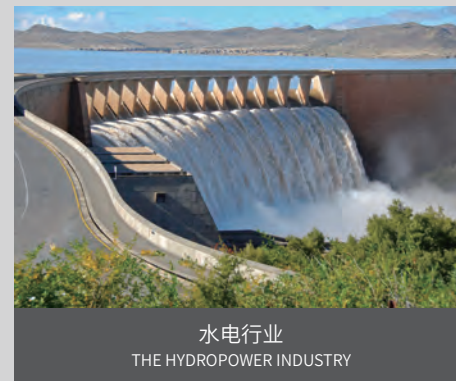
试压行业
PRESSURE TESTING INDUSTRY



潜水消防行业
DIVING FIREFIGHTING INDUSTRY



激光切割行业
LASER CUTTING INDUSTRY



水电行业
THE HYDROPOWER INDUSTRY



军工行业
MILITARY INDUSTRY

MEDIUM PRESSURE SERIES - PET SPECIALIZED
PISTON AIR COMPRESSOR
中压系列—PET专用活塞式空压机



01

高效能力,创造无限可能。我们的吹瓶空压机通过出色的压力输出和流量控制,为您提供最佳的瓶子吹制性能。无论是小型瓶子还是大型容器,我们的空压机都能轻松胜任,实现高质量、高产量的生产目标。

Efficient ability to create unlimited possibilities. Our bottle blowing air compressor provides you with the best bottle blowing performance through excellent pressure output and flow control. Whether it's small bottles or large containers, our air compressor can easily handle them and achieve the production goals of high quality and high output.

02

智能控制,精确驾驶。我们的吹瓶空压机配备先进的智能控制系统,包括油位传感器、欠压保护等智能系统,能够精确监测和调整工作参数。这使得吹瓶过程更加精准、可靠,最大程度地减少废品率,提高生产效率和利润。

Intelligent control, precise driving. Our bottle blowing air compressor is equipped with advanced intelligent control systems, including oil level sensors, undervoltage protection and other intelligent systems, which can accurately monitor and adjust working parameters. This makes the blowing process more precise and reliable, minimizing scrap rates, improving production efficiency and profits.

03

节能环保,追求可持续。我们深知环保意识的重要性,因此我们的吹瓶空压机采用了软启动等技术。通过优化的设计和节能措施,我们致力于降低能源消耗,减少碳排放,为您的企业实现可持续发展做出贡献。

Energy conservation and environmental protection, pursuing sustainability. We are well aware of the importance of environmental awareness, so our bottle blowing air compressor adopts technologies such as soft start. Through optimized design and energy-saving measures, we are committed to reducing energy consumption, carbon emissions, and contributing to the sustainable development of your enterprise.

⚙️ CORE COMPONENTS
核心部件

⚙️ 气阀 - AIR VALVE

采用合金材料,能够承受高温高压的环境,同时具有良好的抗磨损性能。Using alloy materials, it can withstand high temperature and high pressure environments, and has good wear resistance.

气阀



活塞



⚙️ 活塞 - PISTON

采用先进的加工工艺,保证活塞在气缸内的平滑运动和优秀的密封性。Adopting advanced processing technology to ensure smooth movement and excellent sealing of the piston inside the cylinder.

⚙️ 活塞环 - PISTON RING

镀铬活塞环具有耐腐蚀、耐高温、耐磨性高等特点。

Chromium plated piston rings have the characteristics of corrosion resistance, high temperature resistance, and high wear resistance.

活塞环



主机轴承



⚙️ 主机轴承 - MAIN ENGINE BEARINGS

滚针轴承,载荷能力强,并且能够提供较高的刚性和旋转精度。

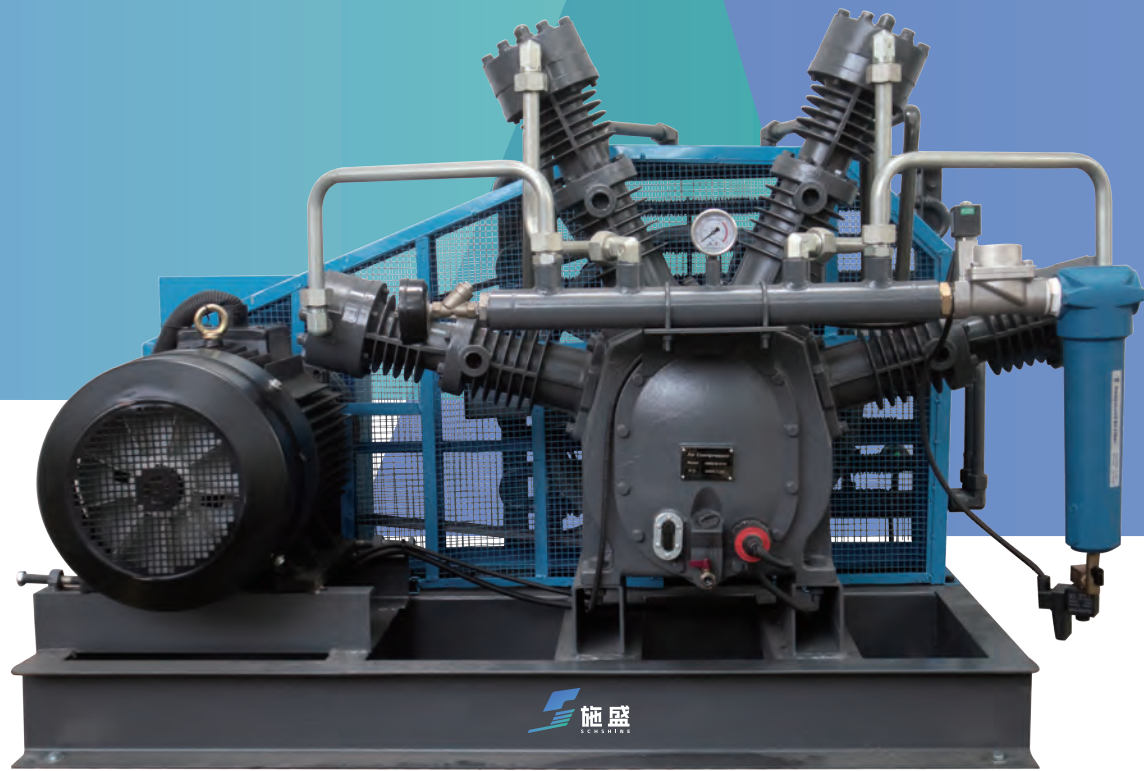
Needle roller bearings have strong load capacity and can provide high rigidity and rotational accuracy.

■ 产品参数 - PRODUCT PARAMETERS

序号 Number	型号 Model	排气量 Exhaust Volume	进气压力 Intake Pressure	排气压力 Exhaust Pressure	电机功率 Motor Power	转速 Speed	裸机外形尺寸 External Dimensions	重量 Weight
		m ³ /min	MPa	MPa	kW	r.p.m	L*W*H mm	kg
1	SWH-1.2/30	1.2	/	3.0	15	760	1360*770*900	450
2	SWH-1.6/30	1.6	/	3.0	18.5	790	1450*850*900	560
3	SXH-2/30	2.0	/	3.0	22	735	1750*900*1200	600
4	2SWH-2.4/30	2.4	/	3.0	2*15	760	1850*1430*1100	950
5	2SWH-3.2/30	3.2	/	3.0	2*18.5	790	2070*1690*1150	1550
6	2SXH-4/30	4.0	/	3.0	2*22	735	1900*2000*1200	1300
7	SXH-2/40	2.0	/	4.0	22	735	1750*900*1200	660
8	SXH-3/40	3.0	/	4.0	30	735	2050*950*1140	920
9	2SXH-4/40	4.0	/	4.0	2*22	735	2060*940*2230	1720
10	2SXH-6/40	6.0	/	4.0	2*30	735	2150*1050*2300	1980

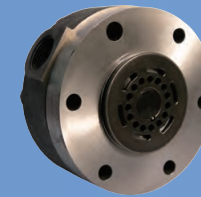
MEDIUM PRESSURE SERIES - PISTON AIR BOOSTER

中压系列—活塞式增压机



CORE COMPONENTS

核心部件



气阀 - AIR VALVE

采用合金材料,能够承受高温高压的环境,同时具有良好的抗磨损性能。

Using alloy materials, it can withstand high temperature and high pressure environments, and has good wear resistance.



活塞 - PISTON

采用先进的加工工艺,保证活塞在气缸内的平滑运动和优秀的密封性。

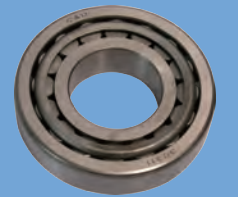
Adopting advanced processing technology to ensure smooth movement and excellent sealing of the piston inside the cylinder.



活塞环 - PISTON RING

镀铬活塞环具有耐腐蚀、耐高温、耐磨性高等特点。

Chromium plated piston rings have the characteristics of corrosion resistance, high temperature resistance, and high wear resistance.



主机轴承 - BEARING

滚针轴承,载荷能力强,并且能够提供较高的刚性和旋转精度。

Needle roller bearings have strong load capacity and can provide high rigidity and rotational accuracy.

高压输出能力 HIGH PRESSURE OUTPUT CAPACITY

空气增压压缩机能够将低压的空气通过压缩过程提升至高压状态。施盛空压机采用镀铬活塞环,使其具备较高的压缩比能力,能够提供所需的高压空气供应。

The air booster compressor can lift low-pressure air to a high-pressure state through the compression process. The Shisheng air compressor adopts chrome plated piston rings, which enable it to have a high compression ratio and provide the required high-pressure air supply.

灵活性和可调节性 FLEXIBILITY AND ADJUSTABILITY

空气增压压缩机通常具备可调节的输出压力范围,可根据具体应用的需求进行调整。这种灵活性使其适用于各种不同的空气增压需求,能够满足不同压力要求的应用。

Air boost compressors typically have an adjustable output pressure range that can be adjusted according to specific application requirements. This flexibility makes it suitable for various different air boosting needs and can meet applications with different pressure requirements.

稳定的气体供应 STABLE GAS SUPPLY

空气增压压缩机能够提供稳定的高压空气供应,保持压力稳定性,并确保空气增压系统能够持续稳定地运行。这对于需要稳定气压的应用非常关键,如PET吹瓶行业,激光切割行业等。

The air booster compressor can provide a stable high-pressure air supply, maintain pressure stability, and ensure the continuous and stable operation of the air booster system. This is crucial for applications that require stable air pressure, such as the PET bottle blowing industry, laser cutting industry, etc.

产品参数 - PRODUCT PARAMETERS

序号 Number	型号 Model	排气量 Exhaust Volume	进气压力 Intake Pressure	排气压力 Exhaust Pressure	电机功率 Motor Power	转速 Speed	裸外形尺寸 External Dimensions	重量 Weight
		m ³ /min	MPa	MPa	kW	r.p.m	L*W*H mm	kg
1	SWH-3/10-40	3.0	1.0	4.0	18.5	735	1400*1050*1000	400
2	SWH-4/10-40	4.0	1.0	4.0	22	735	1450*1050*1150	510
3	SXH-6/10-40	6.0	1.0	4.0	25	735	1700*1150*1200	830
4	SWH-8/10-40	8.0	1.0	4.0	30	650	1800*1200*1300	910
5	SWH-10/10-40	10.0	1.0	4.0	37	650	2000*1200*1300	930

施盛提供丰富的定制选项,可根据客户的要求定制螺杆活塞增压一体机。

Shisheng provides a wide range of customization options and can customize screw piston turbocharging integrated machines according to customer requirements.

MEDIUM PRESSURE SERIES - SCREW BOOSTER INTEGRATED MACHINE

中压系列—螺杆增压一体机

PRODUCT INTRODUCTION

产品介绍

1. 高压输出能力: 空气增压压缩机能够将低压的空气通过压缩过程提升至高压状态。施盛空压机采用镀铬活塞环, 使其具备较高的压缩比能力, 能够提供所需的高压空气供应。
2. 灵活性和可调节性: 空气增压压缩机通常具备可调节的输出压力范围, 可根据具体应用的需求进行调整。这种灵活性使其适用于各种不同的空气增压需求, 能够满足不同压力要求的应用。
3. 稳定的气体供应: 空气增压压缩机能够提供稳定的高压空气供应, 保持压力稳定性, 并确保空气增压系统能够持续稳定地运行。这对于需要稳定气压的应用非常关键, 如PET吹瓶行业, 激光切割行业等。
4. 施盛提供丰富的定制选项, 可根据客户的要求定制螺杆活塞增压一体机。

1. High pressure output capacity: The air booster compressor can lift low-pressure air to a high-pressure state through the compression process. The Shisheng air compressor adopts chrome plated piston rings, which enable it to have a high compression ratio and provide the required high-pressure air supply.
2. Flexibility and adjustability: Air boost compressors typically have an adjustable output pressure range that can be adjusted according to specific application requirements. This flexibility makes it suitable for various different air boosting needs and can meet applications with different pressure requirements.
3. Stable gas supply: The air booster compressor can provide a stable high-pressure air supply, maintain pressure stability, and ensure the continuous and stable operation of the air booster system. This is crucial for applications that require stable air pressure, such as the PET bottle blowing industry, laser cutting industry, etc.
4. Shisheng provides a wide range of customization options and can customize screw piston turbocharging integrated machines according to customer requirements.

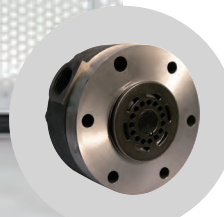
产品参数 - PRODUCT PARAMETERS

序号 Number	型号 Model	排气量 Exhaust Volume	进气压力 Intake Pressure	排气压力 Exhaust Pressure	电机功率 Motor Power	裸机外形尺寸 External Dimensions	重量 Weight
		m ³ /min	MPa	MPa	kW	L*W*H mm	kg
1	SLHC-3/40	3.0	/	4.0	30+18.5	1800*1650*1800	1500
2	SLHC-4/40	4.0	/	4.0	37+22	2000*1900*2200	1800
3	SLHC-6/40	6.0	/	4.0	45+25	12100*2000*2200	1900
4	SLHC-8/40	8.0	/	4.0	55+30	2300*2200*2200	2000
5	SLHC-10/40	10.0	/	4.0	75+37	2400*2300*2400	2200



CORE COMPONENTS

核心部件



气阀 - AIR VALVE

采用合金材料, 能够承受高温高压的环境, 同时具有良好的抗磨损性能。
Using alloy materials, it can withstand high temperature and high pressure environments, and has good wear resistance.



活塞 - PISTON

采用先进的加工工艺, 保证活塞在气缸内的平滑运动和优秀的密封性。
Adopting advanced processing technology to ensure smooth movement and excellent sealing of the piston inside the cylinder.



活塞环 - PISTON RING

镀铬活塞环具有耐腐蚀、耐高温、耐磨性高等特点。
Chromium plated piston rings have the characteristics of corrosion resistance, high temperature resistance, and high wear resistance.



主机轴承 - MAIN ENGINE BEARINGS

滚针轴承, 载荷能力强, 并且能够提供较高的刚性和旋转精度。
Needle roller bearings have strong load capacity and can provide high rigidity and rotational accuracy.



OIL FREE PISTON AIR COMPRESSOR

无油活塞式空压机

01

压缩机采用多级压缩, 从而降低作用在活塞杆上的气体力, 使排期温度远低于允许值, 延长了易损件的使用寿命, 使压缩机更加节能和稳定。

The compressor adopts multi-stage compression to reduce the gas force acting on the piston rod, making the discharge temperature much lower than the allowable value, extending the service life of vulnerable parts, making the compressor more energy-efficient and efficient Stable.

02

整机可采用水冷却, 并设有增压水泵, 可以有效地带走热量, 保证空压机在适宜的温度下运行, 提高设备的使用寿命。

The entire machine can be cooled by water and equipped with a booster water pump, which can effectively remove heat, ensure that the air compressor operates at a suitable temperature, and improve the service life of the equipment.

03

整机采用PLC控制, 各级均设置有温度传感器和压力传感器, 油压、水路也设有传感器, 信号由PLC集中控制, 且有自动故障报警, 超限停机, 并且可实现多机组自动联控。

The entire machine is controlled by PLC, with temperature and pressure sensors installed at all levels. The oil pressure and water circuit are also equipped with sensors, and the signals are centrally controlled by PLC. There are automatic fault alarms, over limit shutdown, and automatic control of multiple units can be achieved.

CORE COMPONENTS

核心部件



气阀 - AIR VALVE

允许快速拆卸和安装, 提高了维护和保养的便捷性。
Allowing quick disassembly and installation improves the convenience of maintenance and upkeep.



活塞环 - PISTON RING

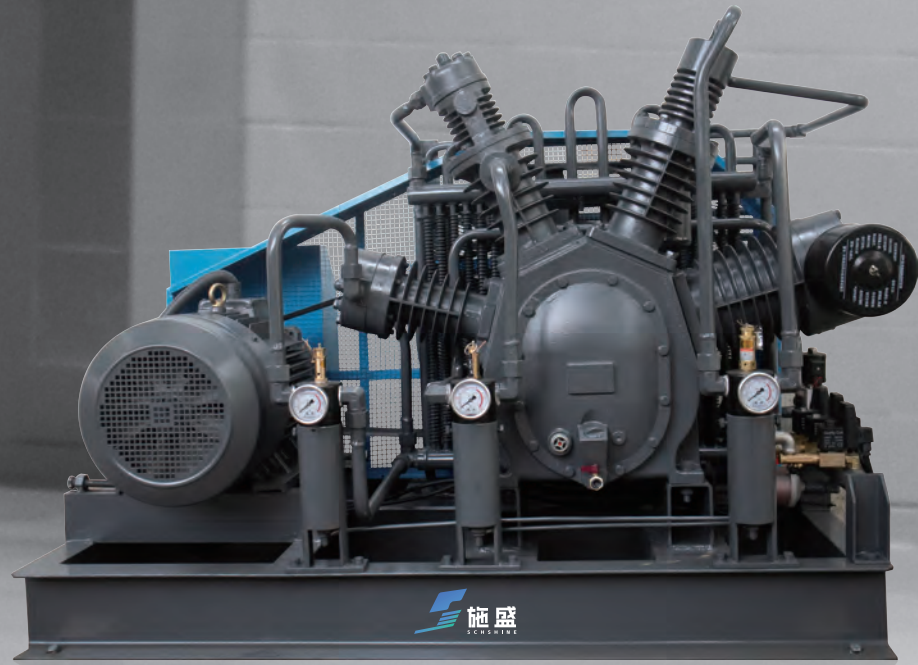
采用PTFE聚四氟乙烯活塞环, 摩擦系数小, 密封性好。
Using PTFE polytetrafluoroethylene piston rings, with low friction coefficient and good sealing performance.

产品参数 - PRODUCT PARAMETERS

序号 Number	型号 Model	排气量 Exhaust Volume	进气压力 Intake Pressure	排气压力 Exhaust Pressure	电机功率 Motor Power	转速 Speed	裸机外形尺寸 External Dimensions	重量 Weight
		m ³ /min	MPa	MPa	kW	r.p.m	L*W*H mm	kg
1	SWLH-6/40	6.0	/	4.0	75	500	4200*1500*2300	2500
2	SWLH-10/40	10.0	/	4.0	110	500	4900*1800*2400	5000
3	SWLH-16/40	16.0	/	4.0	160	390	5400*2200*2700	7400
4	SWLH-20/40	20.0	/	4.0	200	470	5400*2200*2700	7800
5	SWLH-25/40	25.0	/	4.0	250	370	5700*2200*2980	8500
6	SWLH-30/40	30.0	/	4.0	315	420	5700*2200*2980	9000

HIGH PRESSURE SERIES: PISTON HIGH-PRESSURE AIR COMPRESSOR

高压系列:活塞式高压空压机



产品参数 - PRODUCT PARAMETERS

序号 Number	型号 Model	排气量 Exhaust Volume	排气压力 Exhaust Pressure	电机功率 Motor Power	转速 Speed	裸机外形尺寸 External Dimensions	重量 Weight
		m ³ /min	MPa	kW	r.p.m	L*W*H mm	kg
1	SXH-0.1/300	0.1	30.0	2.2	1500	650*380*360	46
	SXH-0.6/100	0.6	10.0	15	600	1600*1050*1450	380
2	SXH-0.6/300	0.6	30.0	22	650	1800*1000*1600	450
3	SXH-1/100	1.0	10.0	22	600	1850*1200*1750	550
4	SXH-1/300	1.0	30.0	30	550	1850*1200*1750	650
5	SXH-1.5/350	1.5	35.0	37	600	1900*1300*1700	850
6	SVH-3/300	3.0	30.0	55	650	1900*1300*1700	980

PORTABLE HIGH-PRESSURE BREATHING AIR COMPRESSOR

便携式高压呼吸空气压缩机



- 1 提供纯净的可呼吸气体
Provide pure breathable gas
- 2 体积小、方便携带
Compact and convenient to carry
- 3 支持自动排污, 自动启停
Supports automatic sewage discharge and automatic start stop

PRODUCT INTRODUCTION

产品介绍

1. 施盛高压空压机气体输出压力可达10MPa-42MPa, 可根据客户要求非标定制, 并提供相应的技术支持。
2. 100系列是便携式呼吸空气压缩机, 轻量化的设计使其便于移动, 凭借可靠的质量深受消防站、化工、劳防、潜水人员的喜爱。
3. 压缩机采用多级压缩, 从而降低作用在活塞杆上的气体力, 使排气温度远低于允许值, 延长了易损件的使用寿命, 使压缩机更加稳定。
4. 活塞环采用多层密封, 减少活塞压缩时产生的气体泄漏, 从而提高压缩机的整体效率。
5. 优秀的冷却效果, 施盛特有风冷散热器, 通过主机叶轮风扇, 可以将冷却风同时吹向气缸和散热器, 大幅降低压缩机的热量, 使机器平稳, 可靠运行。

1. The gas output pressure of the Shisheng high-pressure air compressor can reach 10MPa-42MPa, and non-standard customization can be made according to customer requirements, with corresponding technical support provided.
2. The 100 series is a portable breathing air compressor with a lightweight design that makes it easy to move. With reliable quality, it is loved by firefighters, chemical workers, labor protection workers, and divers.
3. The compressor adopts multi-stage compression to reduce the gas force acting on the piston rod, making the discharge temperature much lower than the allowable value, extending the service life of vulnerable parts, and making the compressor more stable.
4. The piston ring adopts multi-layer sealing to reduce gas leakage generated during piston compression, thereby improving the overall efficiency of the compressor.
5. Excellent cooling effect, with Shisheng's unique air-cooled radiator. Through the main engine impeller fan, the cooling air can be simultaneously blown to the cylinder and radiator, greatly reducing the heat of the compressor, making the machine run smoothly and reliably.

HIGH CONFIGURATION AIR-COOLED FREEZE DRYER (AH SERIES)

风冷高配型冷冻式干燥机(AH系列)

PRODUCT INTRODUCTION 产品介绍

额定进气压力: 0.7Mpa (0.6Mpa~1.0Mpa允许使用, 其他工作压力接受定制)
 额定进气温度: 50°C (极限进气温度≤80°C)
 压力露点: 2-10°C
 额定环境温度: 32°C (2°C~45°C允许使用)
 压力损失: ≤0.02Mpa
 冷却方式: 风冷
 制冷剂: R22 (R407、R134a等环保型冷媒接受定制)
 安装方式: 室内无基础, 混凝土地坪, 周边留空不小于1.5米

Rated intake pressure: 0.7Mpa (0.6Mpa~1.0Mpa allowed for use, other working pressures can be customized)
 Rated intake temperature: 50 °C (maximum intake temperature ≤ 80 °C)
 Pressure dew point: 2-10 °C
 Rated ambient temperature: 32 °C (2 °C~45 °C allowed for use)
 Pressure loss: ≤ 0.02Mpa
 Cooling method: air cooling
 Refrigerant: R22 (environmentally friendly refrigerants such as R407 and R134a can be customized)
 Installation method: Indoor without foundation, concrete floor, with a minimum clearance of 1.5 meters around the perimeter



产品参数 - PRODUCT PARAMETERS

型号 Model	处理量 Processing Capacity	电源电压 Supply Voltage	整机功率 Power	空气进出口 Air inlet and outlet	设备重量 Weight	外形尺寸 External Dimensions
	Nm ³ /min	V/Hz	kW		kg	L*W*H mm
WZS-D10AC	1.5	220/50	0.8	G1"	52	710*440*680
WZS-D20AC	2.5	220/50	0.9	G1"	73	800*440*880
WZS-D30AH	3.8	220/50	1.1	G1½"	95	930*500*980
WZS-D50AH	6.5	220/50	1.5	G1½"	115	1000*600*1030
WZS-D75AH	10.5	220/50	2.2	G2"	160	1150*650*1250
WZS-D100AH	13.5	380/50	2.8	G2½"	225	1300*650*1350
WZS-D120AH	17.0	380/50	2.8	G2½"	235	1300*650*1350
WZS-D150AH	21.5	380/50	5.2	G3"	345	1430*700*1450
WZS-D180AH	25.0	380/50	5.2	G3"	395	1430*700*1450
WZS-D200AH	28.5	380/50	5.5	DN80	530	1600*1550*850
WZS-D250AH	32.0	380/50	6.2	DN100	580	1600*1550*850
WZS-D300AH	37.0	380/50	7.8	DN100	680	1730*1700*850
WZS-D350AH	41.5	380/50	7.8	DN100	750	1730*1700*850
WZS-D400AH	45.0	380/50	10.5	DN100	800	1880*1900*950
WZS-D450AH	50.0	380/50	10.5	DN125	850	1880*1900*950
WZS-D500AH	55.0	380/50	11.8	DN125	910	1800*1950*1300
WZS-D550AH	60.0	380/50	11.8	DN125	950	1800*1950*1300
WZS-D600AH	65.0	380/50	11.8	DN125	1100	1850*2300*1330
WZS-D650AH	70.0	380/50	11.8	DN125	1140	1850*2300*1330
WZS-D700AH	75.0	380/50	13.9	DN125	1280	1860*2400*1400
WZS-D750AH	80.0	380/50	13.9	DN125	1350	1860*2400*1400
WZS-D800AH	85.0	380/50	15.9	DN150	1450	1900*2400*1420
WZS-D900AH	95.0	380/50	16.7	DN150	1600	1900*2450*1400
WZS-D1100AH	110.0	380/50	18.3	DN150	1700	1980*2450*1500
WZS-D1200AH	120.0	380/50	20.6	DN150	1800	1980*2450*1500
WZS-D1400AH	140.0	380/50	21.8	DN200	1950	2050*2700*1550
WZS-D1600AH	160.0	380/50	26	DN200	2100	2123*2650*1550



MICRO HEAT REGENERATION ADSORPTION DRYER (C SERIES)

微热再生吸附式干燥机(C系列)

PRODUCT INTRODUCTION

产品介绍

额定进气压力: 0.7Mpa (0.6Mpa~1.0Mpa允许使用)

额定进气温度: 10°C~30°C (2°C~40°C允许使用)

成品气露点: -20°C~-40°C

环境温度: ≤45°C

压力损失: ≤0.02Mpa

再生方式: 微热再生

吸附剂: 活性氧化铝

进气含油量: ≤0.1mg/m³

平均再生耗气量: 4-8%耗气量

控制方式: 全电子可编程时间控制 (露点控制可选配)

安装方式: 室内无基础, 混凝土地坪, 周边留空不小于1.5米

Rated intake pressure: 0.7Mpa (allowed to be used between 0.6Mpa and 1.0Mpa)

Rated intake temperature: 10 °C~30 °C (2 °C~40 °C allowed for use)

Dew point of finished gas: -20 °C~-40 °C

Environmental temperature: ≤ 45 °C

Pressure loss: ≤ 0.02Mpa

Regeneration method: Micro thermal regeneration

Adsorbent: Activated alumina

Intake oil content: ≤ 0.1mg/m³

Average regeneration gas consumption: 4-8% gas consumption

Control mode: fully electronic programmable time control (dew point control optional)

Installation method: Indoor without foundation, concrete floor, with no less than 1.5 meters of surrounding space left

产品参数 - PRODUCT PARAMETERS

型号 Model	处理量 Processing Capacity	电源电压 Supply Voltage	整机功率 Power	空气进出口 Air inlet and outlet	设备重量 Weight	外形尺寸 External Dimensions
	Nm ³ /min	V/Hz	kW		kg	L*W*H mm
WZS-C10HX	1.5	380/50	0.9	G¾"	92	1500*680*560
WZS-C20HX	2.5	380/50	1.7	G1"	125	1700*720*620
WZS-C30HX	3.8	380/50	1.7	G1"	180	1600*830*570
WZS-C50HX	6.5	380/50	2.5	G1½"	315	1710*1020*640
WZS-C75HX	10.5	380/50	3.1	G2"	448	1900*1160*680
WZS-C100HX	13.5	380/50	3.1	G2"	540	2200*1160*680
WZS-C120HX	17.0	380/50	3.1	G2"	600	2160*1200*690
WZS-C150HX	21.5	380/50	4.1	G2½"	740	2310*1280*980
WZS-C180HX	25.0	380/50	4.1	DN65	850	2450*1350*930
WZS-C200HX	28.5	380/50	6.1	DN80	1040	2320*1460*1060
WZS-C250HX	32.0	380/50	7.1	DN80	1150	2510*1460*1060
WZS-C300HX	37.0	380/50	7.1	DN80	1280	2460*1580*1080
WZS-C350HX	41.5	380/50	9.1	DN100	1390	2730*1700*1160
WZS-C400HX	45.0	380/50	9.1	DN100	1460	2550*1765*1160
WZS-C450HX	50.0	380/50	9.1	DN100	1590	2750*1765*1160
WZS-C500HX	55.0	380/50	10.7	DN100	1700	2690*1825*1150
WZS-C550HX	60.0	380/50	10.7	DN100	1830	2790*1825*1150
WZS-C600HX	65.0	380/50	13.6	DN125	2050	2820*2040*1240
WZS-C650HX	70.0	380/50	15.1	DN125	2170	2920*2040*1240
WZS-C700HX	75.0	380/50	15.1	DN125	2280	3120*2040*1240
WZS-C800HX	85.0	380/50	19.6	DN125	2500	2970*2210*1350
WZS-C900HX	95.0	380/50	22.6	DN150	2720	3250*2330*1430
WZS-C1100HX	110.0	380/50	25.6	DN150	3100	3010*2450*1430
WZS-C1200HX	120.0	380/50	25.6	DN150	3500	3310*2450*1430
WZS-C1400HX	140.0	380/50	28.7	DN200	3800	3350*2860*1850

COMPRESSED AIR PRECISION FILTER

压缩空气精密过滤器

压缩空气是现代工业中最为安全的动力能源,因为它具有灵活性,而且环保、安全、可靠,然后只有在这些压缩空气洁净时,其优势才能体现。众所周知,灰尘颗粒总存在于大气中,这些颗粒被压缩机吸入后,将被浓缩8倍,除此之外,根据压缩机型号的不同或多或少的油及微细油雾的形态进入压缩空气网络,加之在潮湿空气系统产生的腐蚀等不利因素,将造成重大工业难题,即:停产、废品的出现和高额的维修费用等。

为解决这些长期困扰工业企业的难题,用尽可能小的过滤材质处理尽可能大的流量是我们的追求,把多层过滤材料的组合折叠,形成这一世界最先进的过滤技术。

Compressed air is the safest power source in modern industry because it is flexible, environmentally friendly, safe, and reliable. Its advantages can only be reflected when these compressed air are clean. As is well known, dust particles always exist in the atmosphere. When these particles are sucked in by the compressor, they will be concentrated 8 times. In addition, depending on the compressor model, more or less oil and fine oil mist will enter the compressed air network. In addition, adverse factors such as corrosion generated in humid air systems will cause significant industrial problems, such as production stoppage, the emergence of waste products, and high maintenance costs. To solve these long-standing problems that have plagued industrial enterprises, our pursuit is to use the smallest possible filter material to handle the largest possible flow rate. By folding the combination of multi-layer filter materials, we have formed the world's most advanced filtration technology.

过滤器技术性能和应用 - FILTER TECHNICAL PERFORMANCE AND APPLICATION

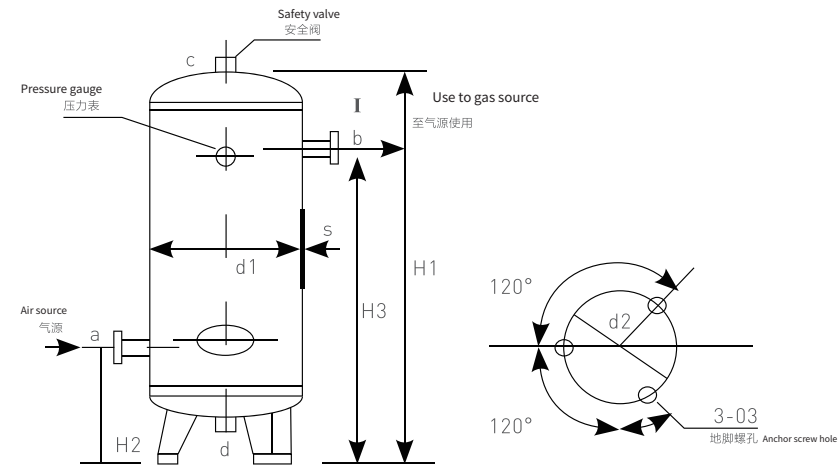
过滤器等级 Filter grade	横断面 Transverse plane	说明 Description	性能数据 Performance data	使用场合 Applications
Pre-filter 预过滤器 Q		机械分离和3微米凝聚过滤 - 大量液体 - 大量颗粒固体 Mechanical separation and 3 micron coalescing filtration - A lot of liquid - A lot of particulate solids	滤除:3微米和更大的固态与液态颗粒:残留油分含量5ppmw/w; IOS8573.1质量等级-固体:3级,油分含量4级进气口最大液体负载:25000ppmw/w Filter out: solid and liquid particles of 3 microns and larger; The residual oil content is 5ppmw/w; IOS8573.1 quality level-solid: level 3, oil content level 4; Maximum liquid load at the air inlet: 25000ppmw/w.	- 冷干机的上游 - 冷却器/分离器的下游 - 直接用于工作点 - Upstream of cold dryer - Downstream of the cooler/separator - Directly used for work
Main pipeline filter 主管路过滤器 P		1微米凝聚过滤器,用于车间下设备的送气管线。 - 工具 - 马达 - 气缸 1 micron coalescing filter, used in the air supply pipeline of the equipment under the workshop. - Machine - Motor - Cylinder	滤除:1微米和更大的固态与液态颗粒:彩六油分含量0.1ppmw/w; IOS8573.1质量等级-固体:2级,油分含量4级进气口最大液体负载:500ppmw/w Filtration: 1 micron and larger solid and liquid particles: Color six oil content 0.1ppmw/w; IOS8573.1 quality level-solid: level 2, oil content level 4, maximum liquid load at inlet: 500ppmw/w	- 高效除油过滤器的上游 - 吸附式干燥机的下游 - 冷干机的上游 - 冷却器/分离器,则用于工作点 - Upstream of high-efficiency oil removal filter - Downstream of adsorption dryer - Upstream of cold dryer - Cooler/separator, for the work station
High efficiency oil removal filter 高效除油过滤器 S		超精细凝聚式过滤器用于关键应用场合的无油空气供应(气流接触产品)的场合 - 氮更换 - 传送 - 搅动 - 电子元件制造 Ultra-fine coalescing filters are used for oil-free air supply in critical applications (air flow contacts products): Nitrogen replacement, transmission, agitation, electronic component manufacturing	滤除:0.01微米和更大的固态与液态颗粒:99.99+%油雾; 残留油分含量0.01ppmw/w IOS8573.1质量等级-固体:1级,油分含量,2级,60ppmw/w Filter out: 0.01 micron and larger solid and liquid particles: 99.99+% oil mist; Residual oil content 0.01ppmw/w IOS8573.1 quality level-solid: level 1, oil content, level 2, 60ppmw/w	- 吸附式干燥机的上游 - 冷冻式干燥机的下游 - 吸附式干燥机的下游用于滤除细小颗粒用于工作点 - Upstream of adsorption dryer - Downstream of refrigerated dryer - Downstream of the adsorption dryer is used to filter out fine particles for the working point
Ultra-efficient oil removal filter 超高效除油过滤器 F		超精细凝聚式过滤器用于关键应用场合的无油空气供应(气流接触产品)的场合 - 氮更换 - 传送 - 搅动 - 电子元件制造 Ultra-fine coalescing filters are used for oil-free air supply in critical applications (air flow contacts products): Nitrogen replacement, transmission, agitation, electronic component manufacturing	滤除:0.01微米和更大的固态与液态颗粒:99.99+%油雾; 残留油分含量0.001ppmw/w; IOS8573.1质量等级-固体:1级,油分含量,1级,进气口最大液体负载:40ppmw/w Filter out: 0.01 micron and larger solid and liquid particles: 99.99+% oil mist; The residual oil content is 0.001ppmw/w; IOS8573.1 quality level-solid: level 1, oil content, level 1, maximum liquid load at the air inlet: 40ppmw/w	- 吸附式干燥机的上游;应使用F级和G级作为前置过滤器 - 冷冻式干燥机的下游 - Upstream of the adsorption dryer; Class F and G should be used as pre-filters - Downstream of refrigerated dryer
Degreasing and deodorizing filter 除油除臭过滤器 H		活性炭吸附过滤器用于无气味空气供应。 - 食品和药品制造 - 搅动 - 电子元件制造 Activated carbon adsorption filter is used for odorless air supply: - Food and pharmaceutical manufacturing - Stir - Electronic component manufacturing	滤除:油气;残留油分含量0.003ppmw/w(油气状)0.01微米和更大的固态颗粒:IOS8573.1质量等级-固体:1级,油分含量,1级过滤器进气口不可有液态-1级过滤器的上游应使用高效除油过滤器超高效微油雾过滤器防止液态油污污染60ppmw/w Filtration: oil and gas; residual oil content of 0.003ppmw/w (oil and gas) 0.01 micron and larger solid particles: IOS8573.1 quality level-solid: level 1, oil content, level 1 filter inlet must not have liquid- The upstream of the level 1 filter should use a high-efficiency oil removal filter-level ultra-high-efficiency micro-oil mist filter to prevent liquid oil pollution 60ppmw/w	- 超高效微油雾过滤器的下游 - 对压缩空气的气味有较高的要求 - Downstream of ultra-efficient micro-oil mist filter - When there are higher requirements for the smell of compressed air

产品参数 - PRODUCT PARAMETERS

项目型号 Project Model	空气处理量 Air Handling Capacity	空气接管口径 Air Tube Caliber	外形尺寸 Boundary			总量 Total Quantity
	Nm ³ /min		长 Length	宽 Width	高 Height	kg
O、P、S、F、H-001	1.2	ZG1	105	78	250	2
O、P、S、F、H-002	2.4	ZG1	105	78	310	3
O、P、S、F、H-003	3.8	ZG1.5	187	99	400	4
O、P、S、F、H-006	6.5	ZG1.5	187	99	425	5
O、P、S、F、H-010	10.7	ZG2	187	99	620	5
O、P、S、F、H-010	10.7	DN50	310	133	860	25
O、P、S、F、H-013	14	ZG2	135	108	750	10
O、P、S、F、H-013	14	DN50	310	133	860	25
O、P、S、F、H-015	18	ZG2.5	148	125	920	13
O、P、S、F、H-015	18	DN65	310	133	860	25
O、P、S、F、H-020	22	ZG2.5	148	125	920	14
O、P、S、F、H-020	22	DN80	379	159	1040	44
O、P、S、F、H-030	35	DN100	465	219	1060	65
O、P、S、F、H-040	45	DN125	470	219	1060	69
O、P、S、F、H-054	54	DN125	513	270	1215	96
O、P、S、F、H-066	60	DN125	513	273	1215	96
O、P、S、F、H-088	88	DN150	615	325	1395	140
O、P、S、F、H-110	110	DN150	615	416	1395	145
O、P、S、F、H-132	132	DN150	615	416	1395	210
O、P、S、F、H-150	150	DN200	615	416	1395	220
O、P、S、F、H-180	180	DN200	615	466	1395	235
O、P、S、F、H-200	200	DN200	615	466	1395	240
O、P、S、F、H-230	230	DN200	615	466	1395	265

MEDIUM PRESSURE GAS STORAGE TANK (2.5-4.0 MPA)

中压储气罐 (2.5-4.0MPA)



PRODUCT FEATURES

产品特点

- | | |
|---|---|
| ① 容积:0.1m ³ -100m ³ | ① Volume:0.1m ³ -100m ³ |
| ② 工作压力:2.5MPa~4.0MPa | ② Working Pressure:2.5MPa~4.0MPa |
| ③ 使用年限:10年 | ③ Service Life :10 Years |
| ④ 材质:Q345R/SUS304 | ④ Texture Of Material:Q345R/SUS304 |
| ⑤ 介质:空气、蒸汽、氮气、氧气、水 | ⑤ Medium:Air, Steam, Nitrogen, Oxygen, Water |

PRODUCT INTRODUCTION

产品介绍

空气罐(压力容器),又名压缩空气储气罐,是专门用于储存压缩空气的压力容器,主要用于存气缓冲,同时起稳定系统压力的作用,避免空压机频繁加卸载和除掉大部分的液态水。

Air tank (pressure vessel), also known as compressed air storage tank, is a pressure vessel specifically used for storing compressed air. It is mainly used for storing and buffering air, while also stabilizing system pressure, avoiding frequent loading and unloading of the air compressor and removing most of the liquid water.

产品参数 - PRODUCT PARAMETERS

序号 No.	规格 Specifications 容积/工作压力 Volume/Operation pressure	设计温度 Designed temperature °C	容器总高H1 Total container height	容器内径 Container inner diameter	进气口 Air inlet			出气口 Air outlet			支座 Support		安全阀 接口 Relief valve connector	排污阀 接口 Drainage valve connector
					H2	DN	螺纹式 Threaded type	H3	DN	螺纹式 Threaded type	D	d		
1	0.3/2.5	110	1548	550	644		RP1½	1144		RP1½	400	20	RP3/4	R1/2
2	0.3/3.0		645		1145									
3	0.3/4.0		647		1147									
4	0.6/2.5	110	2100	650	670		RP1½	1670		RP1½	460	20	RP3/4	R1/2
5	0.6/3.0		671		1671									
6	0.6/4.0		673		1673									
7	1.0/2.5	110	2311	800	693	65	RP1½	1903	65	RP1½	560	24	RP1	R1/2
8	1.0/3.0		695		1905									
9	1.0/4.0		697		1907									
10	1.5/2.5	110	2745	900	740	65	RP2	2300	65	RP2	630	24	RP1	R1/2
11	1.5/3.0		742		2302									
12	1.5/4.0		744		2304									
13	2.0/2.5	110	2800	1000	765	80	RP2	2325	80	RP2	700	24	RP1¼	R1/2
14	2.0/3.0		767		2327									
15	2.0/4.0		771		2331									
16	2.5/2.5	110	3320	1000	765	80		2845			700	24	RP1¼	R1/2
17	2.5/3.0		767		2847									
18	2.5/4.0		771		2851									
19	3.0/2.5	110	2944	1200	857	80		2417	80		906	24	RP1½	R1/2
20	3.0/3.0		859		2419									
21	3.0/4.0		865		2425									
22	4.0/2.5	110	3058	1400	919	100		2479	100		1050	24	RP1½	R3/4
23	4.0/3.0		921		2481									
24	5.0/2.5	110	3698	1400	919	100		2999	100		1050	24	DN50	R3/4
25	5.0/3.0		921		3001									
26	6.0/2.5	110	4298	1400	919	100		3629	100		1050	24	DN50	R3/4
27	6.0/3.0		921		3631									
28	8.0/2.5	110	3230	2000	1095	125		2375	125		1500	32	DN50	R3/4
29	8.0/3.0		1097		2377									
30	10.0/2.5	110	3830	2000	1095	150		3005	150		1500	32	DN65	R3/4

客户案例

Customer Cases



宝钢钢铁股份有限公司
BAOSTEEL IRON AND STEEL CO., LTD



富德能源化工发展有限公司
FUDE ENERGY AND CHEMICAL DEVELOPMENT CO., LTD



芬兰瓦锡兰发动机有限公司
FINLAND WARTSILA ENGINE CO., LTD



中国第一汽车集团有限公司
CHINA FAW GROUP CO., LTD



华润怡宝饮料(中国)有限公司
CHINA RESOURCES YIBAO BEVERAGE (CHINA) CO., LTD



湖北新集水利枢纽项目
HUBEI XINJI WATER CONSERVANCY HUB PROJECT

PRODUCT TECHNICAL SERVICES AND AFTER-SALES SERVICE 产品技术服务和售后服务

- 施盛的服务人员为用户提供首次开机调试协助;
- 本公司对制造和销售的产品, 在从上海施盛机械制造有限公司发货后12个月内, 承诺产品质保;
- 为用户提供及时的维修服务和配件供应;
- 施盛开通了服务热线, 为您及时提供压缩空气系统的技术支持、故障分析、最快事件处理, 及技术资源共享;
- 每天 24 小时提供帮助, 我们会有专职的服务技师在半小时给你们解答, 并会根据需要安排服务工程师到现场提供服务;

- Shisheng's service personnel provide users with first-time startup debugging assistance;
- Our company promises a product warranty for the products manufactured and sold within 12 months after shipment from Shanghai Shisheng Machinery Manufacturing Co., Ltd;
- Provide timely maintenance services and accessory supply to users;
- Shisheng has opened a service hotline to provide you with timely technical support, fault analysis, the fastest event handling, and technical resource sharing for compressed air systems;
- We provide assistance 24 hours a day, and we have dedicated service technicians to answer your questions within half an hour. We will also arrange service engineers to provide on-site services as needed;

ACCORDING TO USER NEEDS, SHISHENG CAN PROVIDE THE FOLLOWING SERVICES: 施盛根据用户的需要可提供以下服务:

- 空气系统评估: 由本公司专业技术工程师对用户已有压缩空气系统压力、气量等通过专业工具全面评估, 专业软件分析, 推荐合理化建议和改进方案, 最大限度地降低运行费用;
- 整个空气系统远程监测、联控、通信信号输出, 保证气量稳定、压力恒定、自动调节;
- 其他高效节能控制系统、变频节能设备等; 压缩空气系统管道安装: 可以提供无缝钢管、不锈钢管、超级管路等各种管道, 费用根据用户用气现场需要另计;
- 主机、电机振动分析和检测、整机大修、一次性保养服务、及其他厂商空压机的维护保养。

- Air system evaluation: Our company's professional technical engineers conduct a comprehensive evaluation of the user's existing compressed air system pressure, air volume, etc. through professional tools, professional software analysis, and recommend reasonable suggestions and improvement plans to minimize operating costs;
- Remote monitoring, joint control, and communication signal output of the entire air system ensure stable air volume, constant pressure, and automatic adjustment;
- Other high-efficiency energy-saving control systems, frequency conversion energy-saving equipment, etc; Installation of compressed air system pipelines: Various pipelines such as seamless steel pipes, stainless steel pipes, and super pipelines can be provided, and the cost will be calculated separately according to the user's on-site gas needs;
- Vibration analysis and testing of the host and motor, major overhaul of the entire machine, one-time maintenance services, and maintenance of air compressors from other manufacturers.